

INSPIRATIONS
CLOSE TO YOU



PRIMEBOARD

HIGH-QUALITY LACQUERED SURFACES
IN MATT AND HIGH GLOSS FINISHES

DUROPAL

thermopal

 PFLIEDERER

INSPIRATIONS CLOSE TO YOU

ONE PFLEIDERER: INSPIRATIONS CLOSE TO YOU – FOR YOUR WORK AND YOUR REQUIREMENTS.

The Pfleiderer brand has reorganised itself. A new, international and powerful brand has emerged from the amalgamation of Pfleiderer Grajewo and Pfleiderer GmbH.

In the course of this process we have been able to harmonise all the production locations, simplify the processes and optimise our product range and services. Thus, you now have access to a range of decors, surface textures and sizes that are identical throughout the world and unique in its breadth and depth.

For you, One Pfleiderer means: a strong partner for high-quality wood-based panels with outstanding decorative surface expertise, customer-oriented service and a consistent focus on sustainability. And last but not least, countless creative and practice-oriented “inspirations close to you”.

PRIMEBOARD

NEW STANDARDS IN HIGH QUALITY LACQUERED SURFACES

Fine, but robust: With PrimeBoard, Pfleiderer presents a wood-based panel, which combines an attractive painted look, optimum workability and high durability. Whether PrimeBoard XTreme Matt or PrimeBoard XTreme High Gloss: Its innovative multi-coating technology makes it particularly easy to clean and permanently withstands high stresses. Integrated in our colour match range, the new lacquered surface allows for versatile and flexible use with perfect combinations while ensuring long-lasting colour stability. PrimeBoard also stands out due to its excellent machinability.

Unique in a variety of ways

- Elegant surface finish
- High colour stability
- Colour match with DecoBoard and Duropal HPL
- Easy to process
- Resistant and easy care
- Solvent-free
- Waste-efficient dimensions
- Highly cost-effective

CONTENT

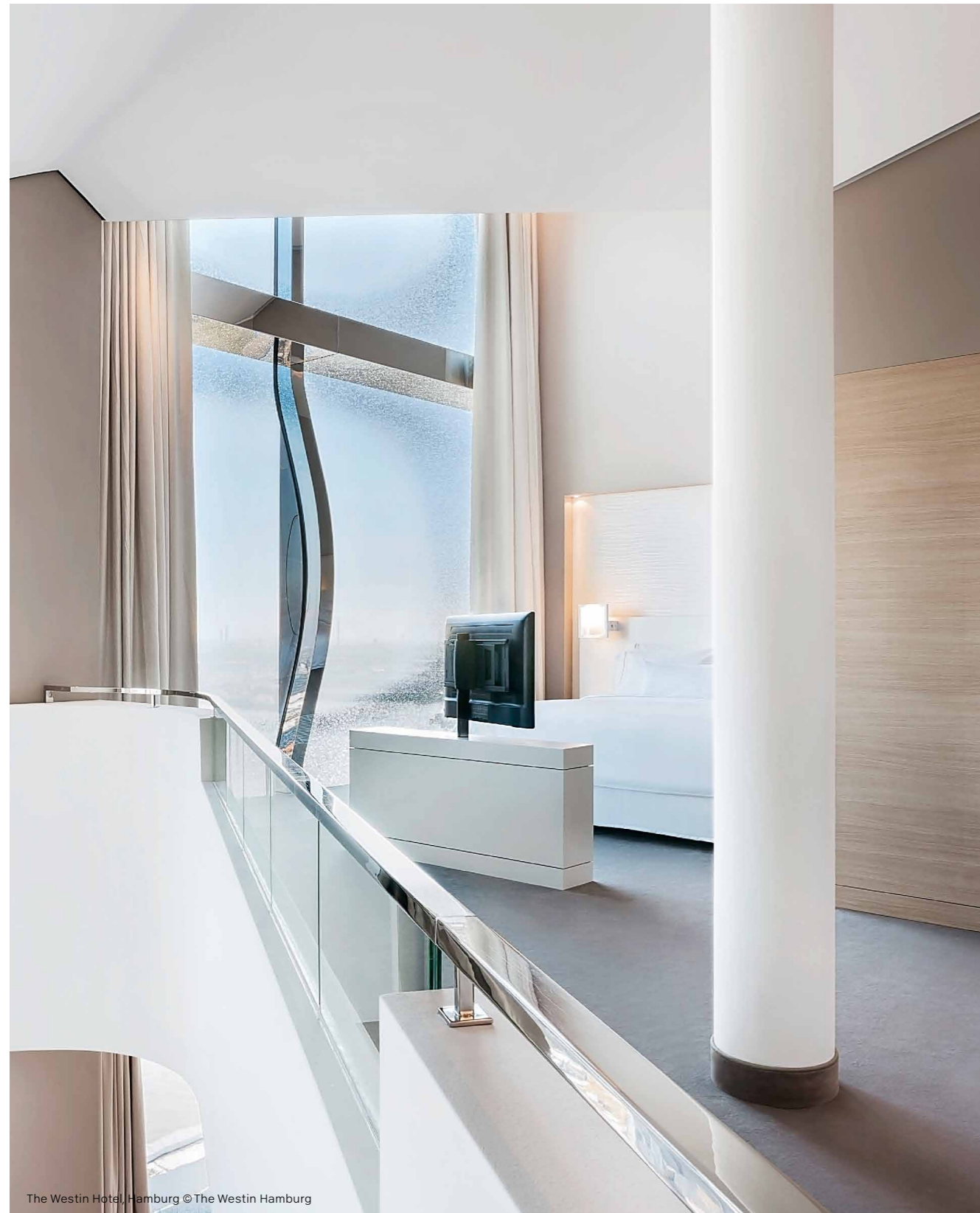
XTreme Matt texture	6
Case studies and examples of application	7
XTreme High Gloss texture	10
Case studies and examples of application	11
Stock collection	14
Technology and processing	16
Sustainability	18
Contact	19

**PRIMEBOARD
XTREME MATT (XT)**



Purism, which is never out of fashion: With the XTreme Matt surface, Pfleiderer PrimeBoard looks as modern as it is timeless. The extremely matt finish, with less than five gloss units, enthral designers; the velvety feel invites people to touch it. XTreme Matt gives plain decors and wood reproductions a truly pure and precious appearance. The high degree of everyday suitability is enhanced by the anti-fingerprint effect: It protects the surface against unwanted soiling and enables particularly fast and easy cleaning.

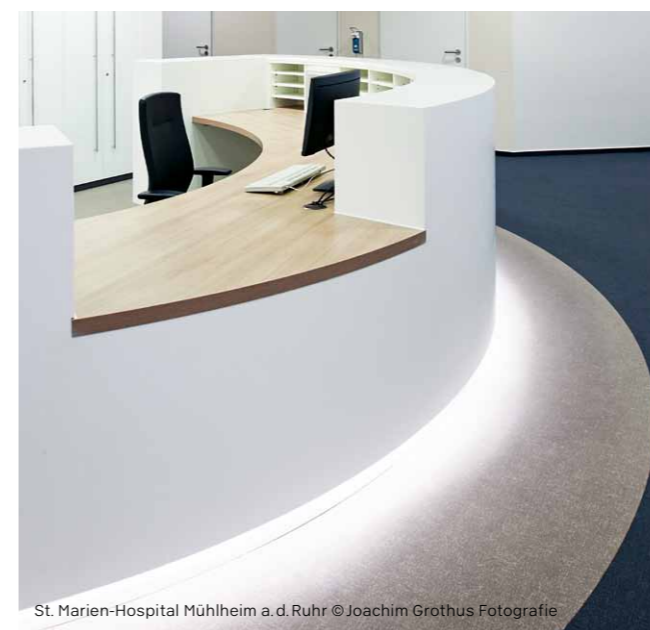




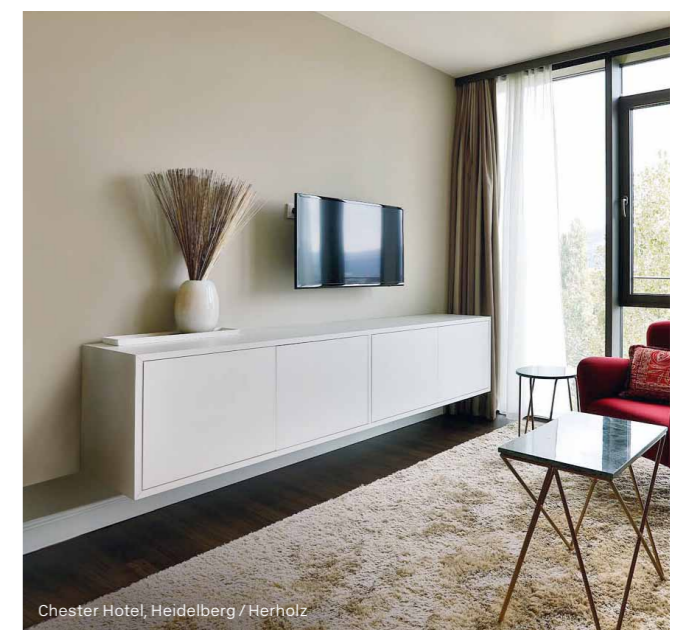
The Westin Hotel, Hamburg © The Westin Hamburg



Fraunhofer ZVE, Stuttgart © Haworth GmbH



St. Marien-Hospital Mühlheim a. d. Ruhr © Joachim Grothus Fotografie

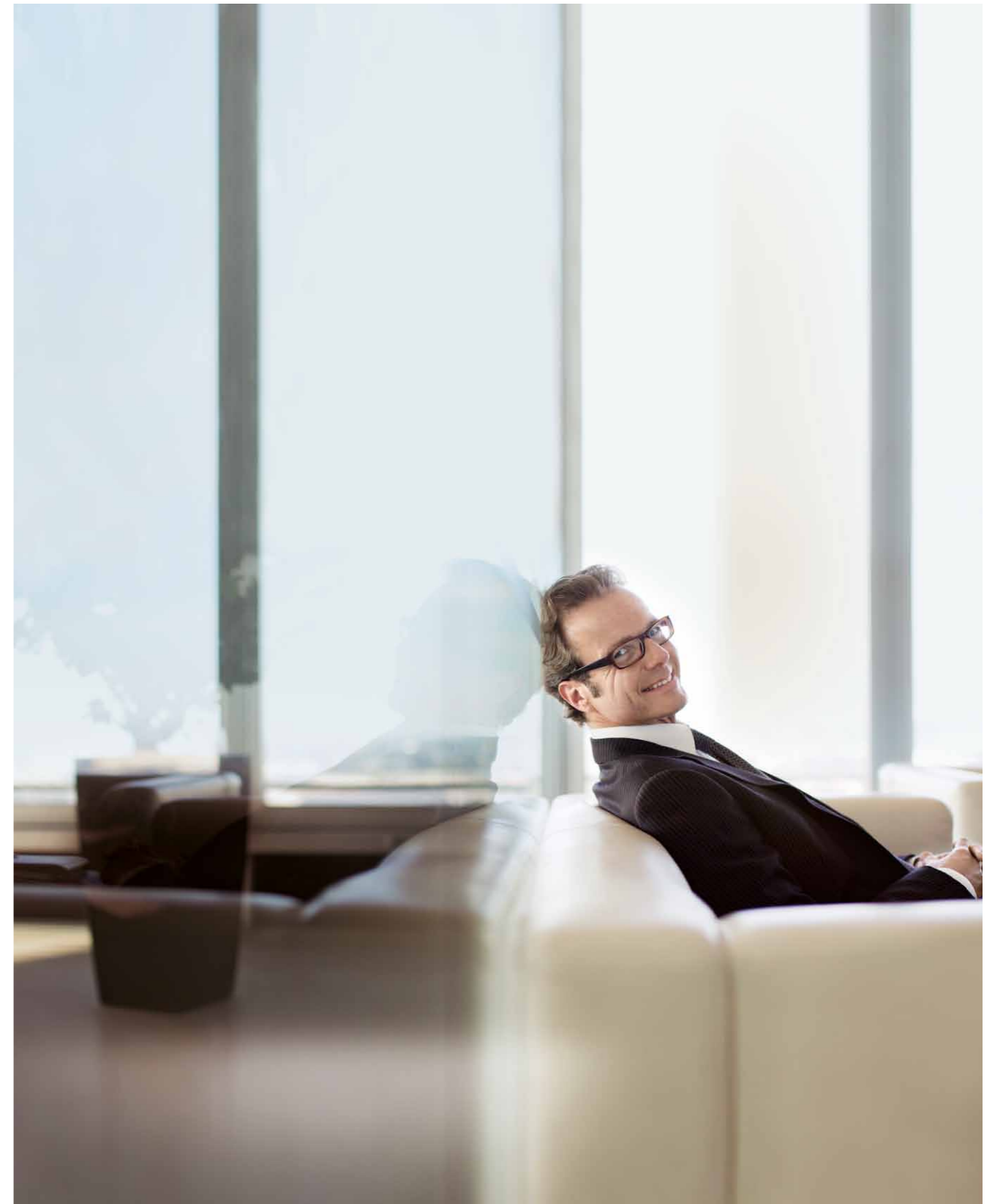
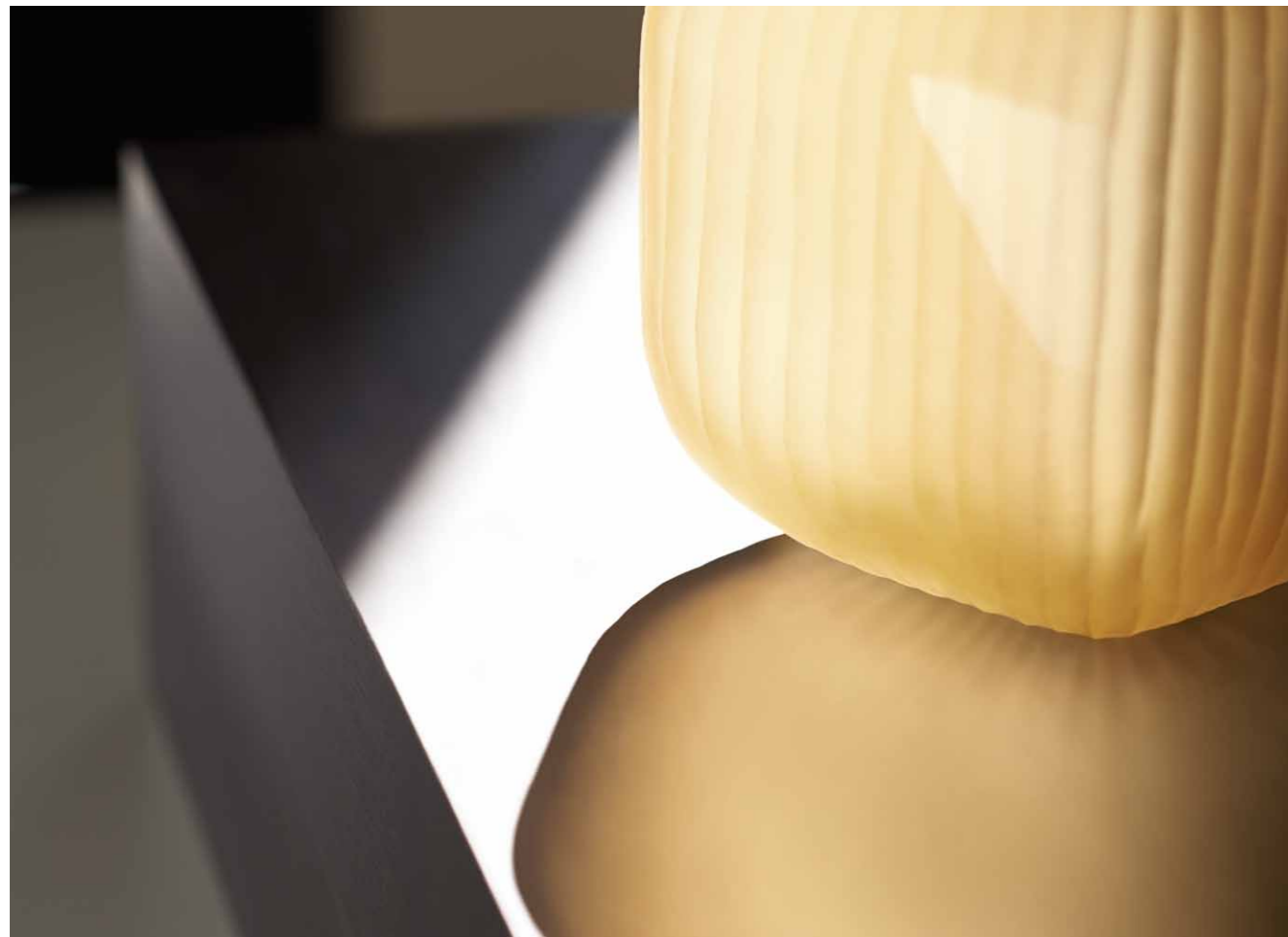


Chester Hotel, Heidelberg / Herholz

**PRIMEBOARD
XTREME HIGH GLOSS (XG)**

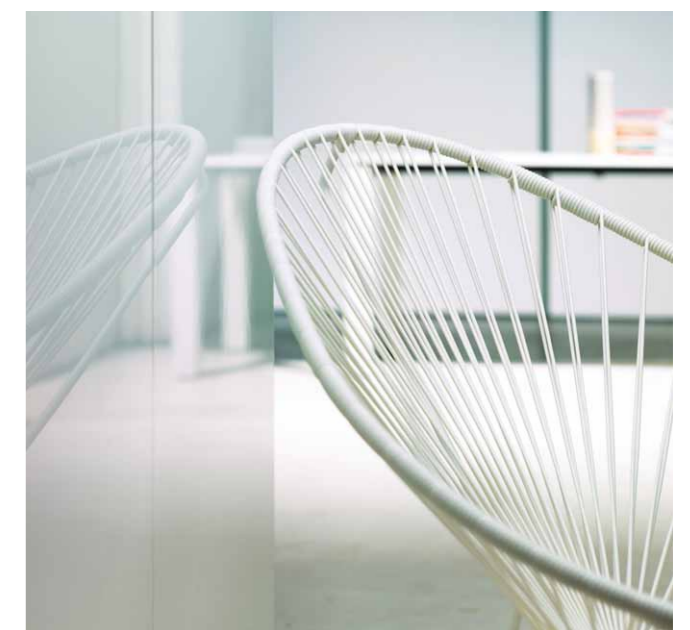
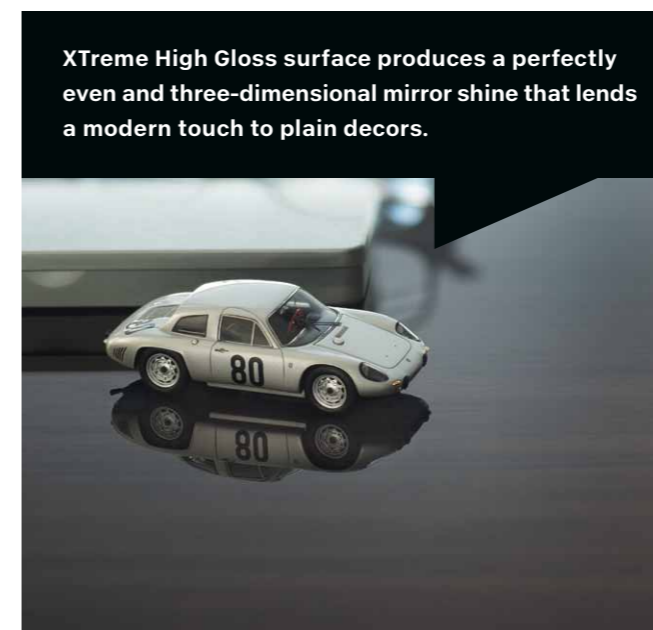


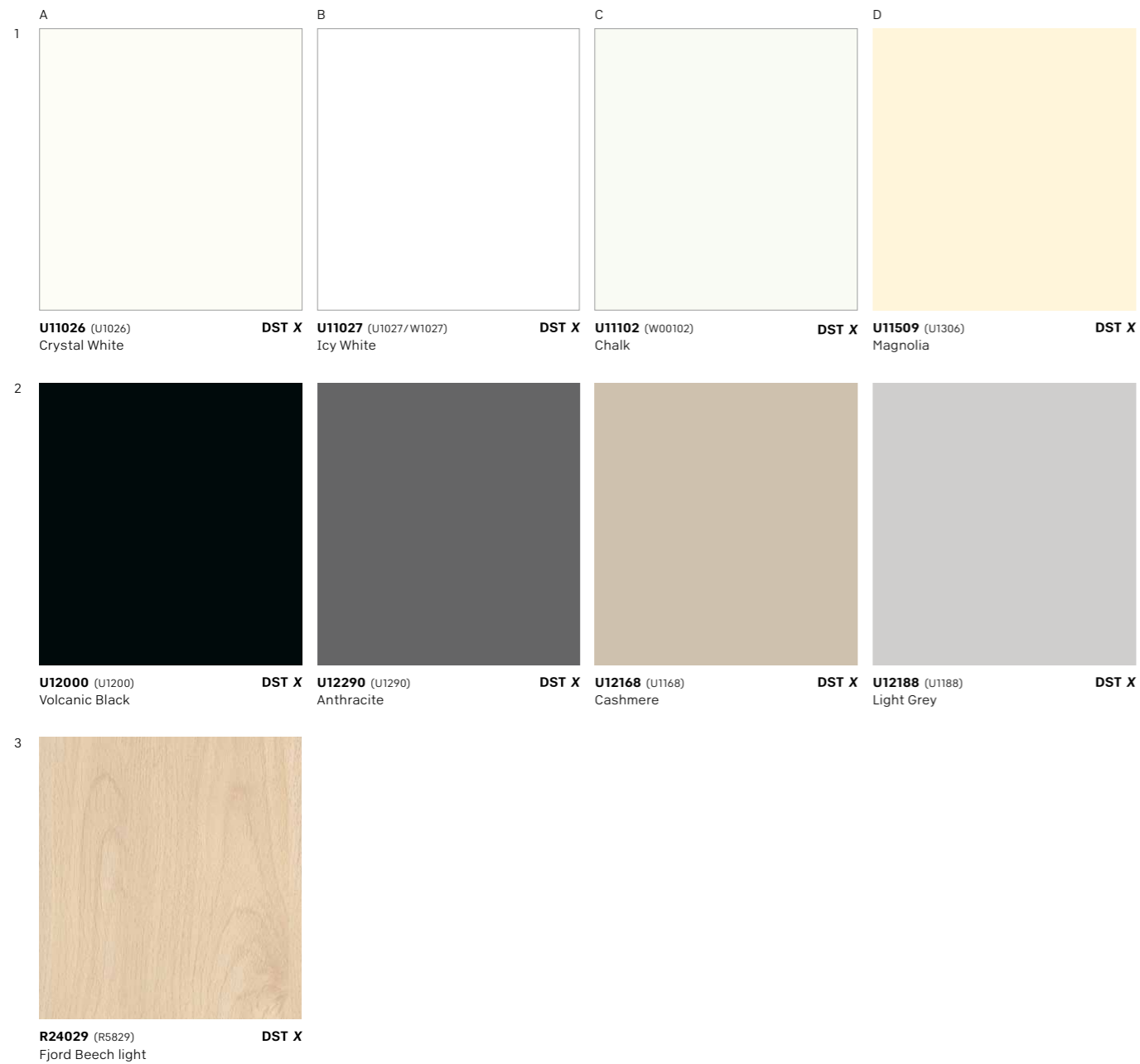
Highly glossy, extremely elegant: Pfleiderer PrimeBoard with XTreme High Gloss surface produces a perfectly even and three-dimensional mirror shine that lends a modern touch to plain decors. At the same time, its impressive depth conveys an extraordinary elegance to classic wood, stone and mother-of-pearl decors; and thanks to its excellent abrasion and scratch resistance, the high-quality surface will retain its gloss for a long time.





The Westin Hotel, Hamburg
© The Westin Hamburg





Whether in XTreme Matt or XTreme High Gloss: Pfleiderer PrimeBoard can be produced with an extensive range of decors. By using pigmented paints, an optimum colour match is achieved with DecoBoard and Duropal HPL. Individually customised colour wishes are also possible. Our decor range is available on request.

DST Combinable with our DST range products
X Combinable with our **DST-XPRESS** stock and quick delivery range products

STOCK PROGRAMME PRIMEBOARD*

Decor Reference	Coordinates	Decor description	NCS code	PrimeBoard XTreme Matt (XT)	PrimeBoard XTreme High Gloss (XG)	
U11026 (U1026)	Crystal White	A1	Neutral plain colours	S0502-G50Y	18/19 mm	18/19 mm
U11027 (U1027/W1027)	Icy White	B1	Neutral plain colours	S0505-R60B	18/19 mm	18/19 mm
U11102 (W00102)	Chalk	C1	Neutral plain colours	S0502-G	18/19 mm	18/19 mm
U11509 (U1306)	Magnolia	D1	Chromatic plain colours	S0505-Y20R	19 mm	19 mm
U12000 (U1200)	Volcanic Black	A2	Neutral plain colours	S8502-B	19 mm	19 mm
U12168 (U1168)	Cashmere	C2	Chromatic plain colours	S2002-Y50R	19 mm	19 mm
U12188 (U1188)	Light Grey	D2	Neutral plain colours	S2000-N	19 mm	19 mm
U12290 (U1290)	Anthracite	B2	Neutral plain colours	S6502-B	19 mm	19 mm
R24029 (R5829)	Fjord Beech light	A3	Flowered plank		19 mm	

*Cores: Chipboard P2, E1
Front: painted, in textures XT/XG
Rear: Texture VV



Chipboard P2

PrimeBoard is available in thicknesses 10/12/16/18/19 and 25 mm on P2 and MDF plus cores. Other thicknesses and cores available on request.



MDF plus

PrimeBoard can also be supplied with PEFC™ or FSC® certification on request.

Further information and technical data at www.pfleiderer.com

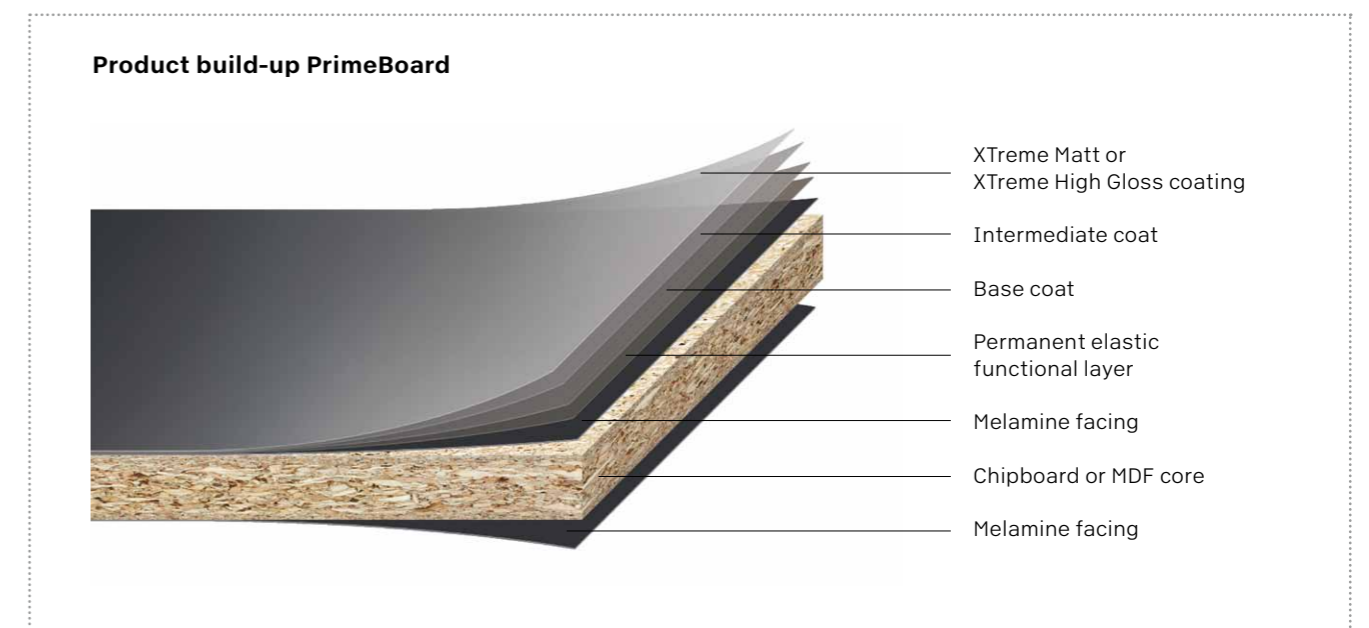
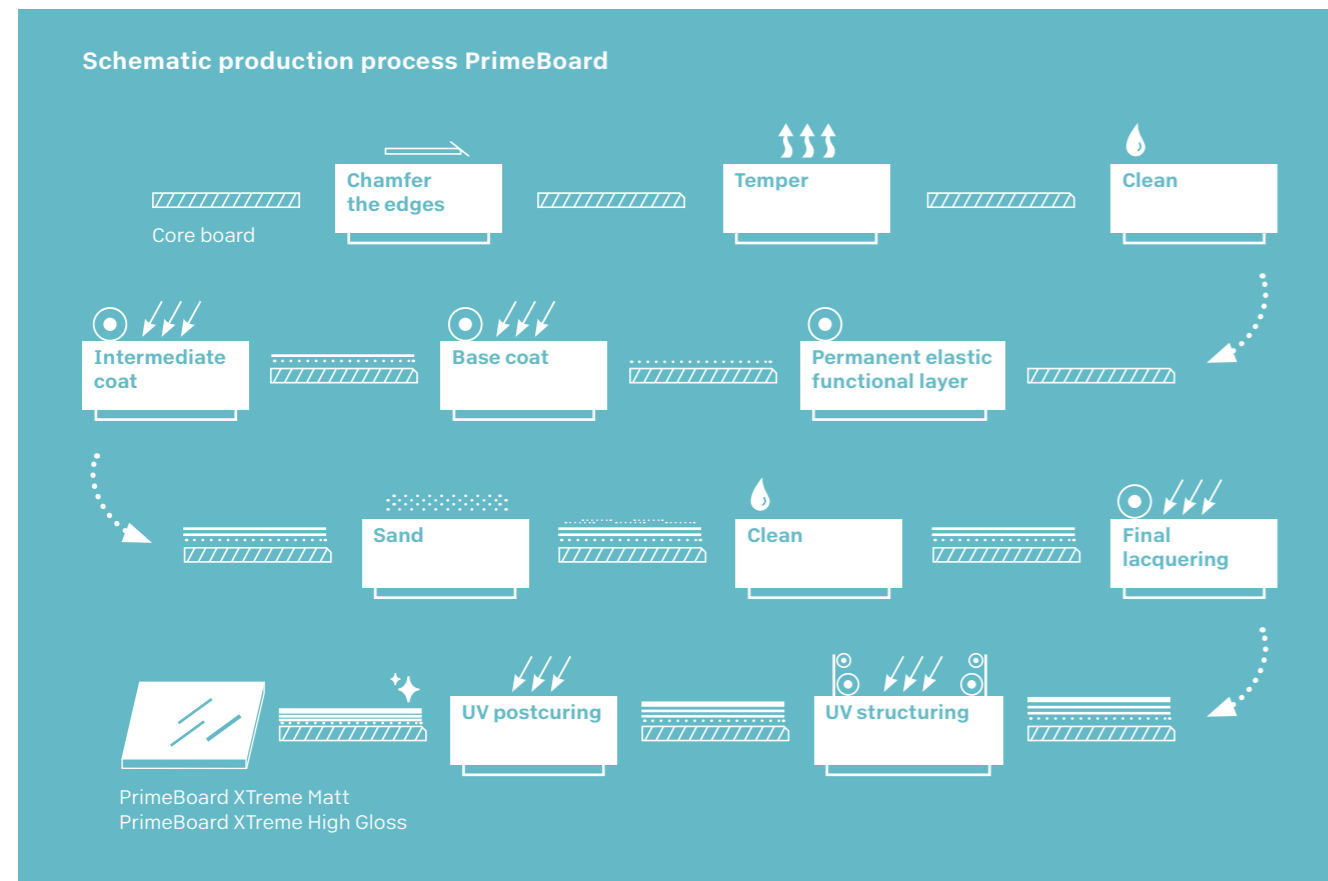
THE PRODUCTION MAKES THE DIFFERENCE

Unique in Europe so far, PrimeBoard's manufacturing process is, in this form, being exclusively employed by Pfleiderer. The special feature is the combination of two production systems. A PUR functional coating applied to the core board in a hot coating process forms a permanently elastic substrate, which ensures very good processing. The functional coating does not become brittle and is able to level out thermal and mechanical

forces. The paint surface is applied by means of calenders, which offers a substantial quality advantage compared to conventional pouring or roller systems. The technology is based on solvent-free acrylic lacquers that consist of 100% solids. The coating can be applied on either one or both sides. The paint hardening under the exclusion of oxygen produces a highly scratch-resistant surface.

PROBLEM-FREE WORKING, PERFECT RESULT

The finished panel is characterised not only by its fine look and feel but also due to its extraordinary robustness, easy care and durability. This resistance is also noticeable during processing: Mainly due to the permanently elastic PUR functional layer, no chipping or cracks form during sawing, cutting, drilling or bevelling, and the result is always perfect. Thanks to the optimum format 2,800 x 2,100 mm with minimum cutting waste, economical processing is possible.



**YOU CAN HAVE A CLEAR CONSCIENCE
WHEN YOU WORK WITH US.**



Sustainable thinking and action is essential for all of our futures. Especially amongst your customers, the awareness of sustainably produced products that are suitable for a healthy living environment is constantly growing.

Pfleiderer pays attention to the absolute sustainability of all the company's activities. On all levels – economic, ecological and social: we not only manufacture our products with the utmost care, but also within the framework of a certified environment management system. In the production process, Pfleiderer pays attention to absolute ecology, e.g. in the formaldehyde-free glued panel LivingBoard, which has been synonymous with sustainable construction for almost four decades.

We also have a special responsibility as an employer: for this reason, a culture of trust focused on autonomous action is fostered in our company. Sustainability from which you benefit – through environmentally friendly products, dedicated employees and maximum satisfaction.

**ANY QUESTIONS? WE LOOK FORWARD
TO HEARING FROM YOU.**



Your satisfaction is our ultimate goal. But we go beyond this: Our goal is to surpass your expectations. That is why our partners can expect the highest standards in all areas of our operations. Do you have a specific project or just a simple question? Whichever way: We look forward to new challenges – and to your call.

For all countries except UK:
SAMPLE SERVICE
Tel.: +49 (0) 9181 / 28 480
Fax: +49 (0) 9181 / 28 482
samples@pfleiderer.com

For customers in the UK:
24-HOUR SERVICE
Samples available to order
around the clock:
Tel.: +44 (0) 1625 660 411
Fax: +44 (0) 1625 617 301
info@pfleiderer.co.uk
www.pfleiderer.co.uk

*Service and security for your
creativity and your projects.*



For customers in the UK:
24-HOUR SERVICE

**Samples available to order
around the clock:**

Tel.: +44 (0) 1625 660 411
Fax: +44 (0) 1625 617 301
info@pfleiderer.co.uk
www.pfleiderer.co.uk



For all countries except UK:
SAMPLE SERVICE

Tel.: +49 (0) 9181 / 28 480
Fax: +49 (0) 9181 / 28 482
samples@pfleiderer.com

© Copyright 2017 Pfleiderer Deutschland GmbH.

This information has been compiled with the greatest care. Nevertheless we can assume no liability for the correctness, completeness and up-to-dateness of this information. Colour deviations caused by the printing technology are possible.

In view of the ongoing further development and adaptation of our products, possible amendments to the relevant standards, laws and regulations, our technical data sheets and product documentation expressly do not constitute a legally binding assurance of the properties described there. In particular no guarantee of suitability for a concrete application can be derived. It is therefore the personal responsibility of the individual user in all cases to check the processing and suitability of the products described in this document for the intended application in advance, and to take into consideration the legal framework and the respective state-of-the-art. We furthermore expressly draw attention to the applicability of our General Terms and Conditions.

Our General Terms and Conditions can be found on our Internet website: www.pfleiderer.com

**Pfleiderer employs wood
from certified sustainable
forest management.**



Matching ABS edges can be obtained
directly from your Pfleiderer dealer
or through Rudolf Ostermann GmbH:
www.ostermann.eu



For CPL laminate edges:

Please contact us for a quotation.

Pfleiderer UK Limited · Oakfield House · Springwood Way · Tytherington Business Park · Macclesfield
Cheshire SK10 2XA · England · Tel.: +44 (0) 16 25 660 410 · Fax: +44 (0) 16 25 617 301 · info@pfleiderer.co.uk · www.pfleiderer.co.uk
Pfleiderer Deutschland GmbH · Ingolstädter Straße 51 · 92318 Neumarkt · Germany
Tel.: +49 (0) 9181/28 480 · Fax: +49 (0) 9181/28 482 · info@pfleiderer.com · www.pfleiderer.com